

# The power of routines in peak hour appliance prioritization

- Exploring Swedes stated preferences during hypothetical load restrictions

A. L. Martinez Cruz<sup>1,2</sup> and Lars Persson (me)<sup>1,3</sup>

[lars.person@umu.se](mailto:lars.person@umu.se)

<sup>1</sup> Centre for environmental and resource economics (CERE)

<sup>2</sup> Swedish University of Agricultural Sciences

<sup>3</sup> Umeå School of Business, Economics and Statistics, Sweden



- Electricity/Energy on the (geo)political agenda
- Also for developed countries
- Electrification; Transition; Nuclear phase-out; Intermittent
- DSM and consumer flexibility
- Limited peak hour load – Prioritize chores, appliances
- Implications for household equality, justice, distribution, etc.

- Economics
  - Average household; VoLL; Soft load control; DSM – High WTP
  - Flexibility in appliance choice not important
- Social science
  - Electricity use linked to structure, social organization, etc. of hh members
  - Consequences and social costs of DSM and behavioral changes
  - Varying capacity to respond – energy justice and distr implications
  - Ability linked to work patterns, social practices, hh composition, culture, access to energy storage, etc.
  - Flexibility capital and justice – interact with the gendered organization of everyday life

- Hypothetical scenarios with stepwise limited load
- Disclose routines, prioritization and potential substitution of appliances in peak hour
- Quantitative approach
- A (recursive) Bivariate Probit approach to analyze
  - Routines: use of appliances in a typical week during peak demand hours
  - Prioritization of appliances under limited load

# Data and empirical approach

- Swedish households;  $\approx 2,000$  responses; Y 2017; Representative
- Questionnaire – three parts: Routines and habits; Hypothetical electricity contracts; VoLL (black-outs)
- High-power appliances during weekday afternoon, winter season
- Limited load scenarios -- 5 kW; 3.5 kW; 2 kW

# Routines (habits)

Considering weekdays, 4.30-7.30pm, December through February.  
How often does your household use the following appliances?

4-5 days/week

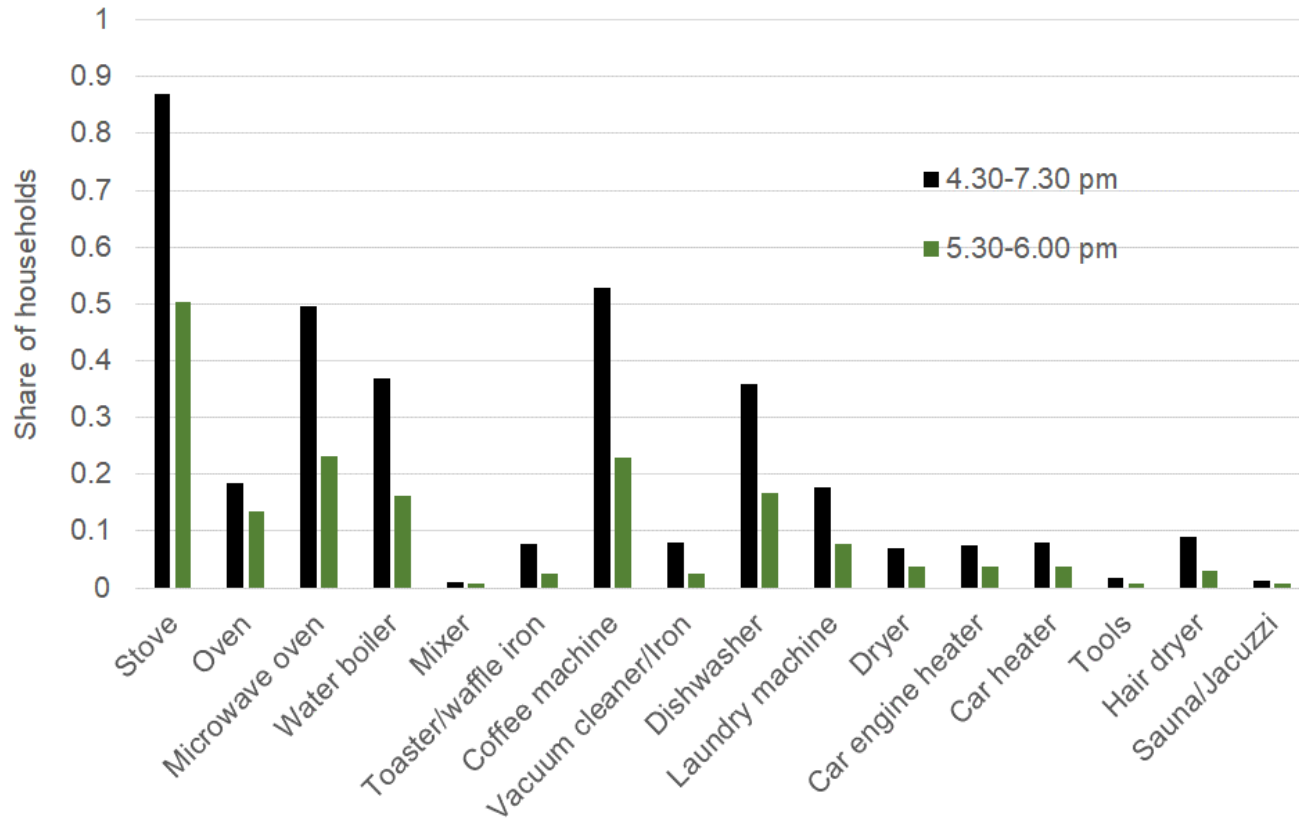
2-3 days/week

0-1 days/week

Never

[16 different appliances – high power]

[Also asked about 5.30-6pm]

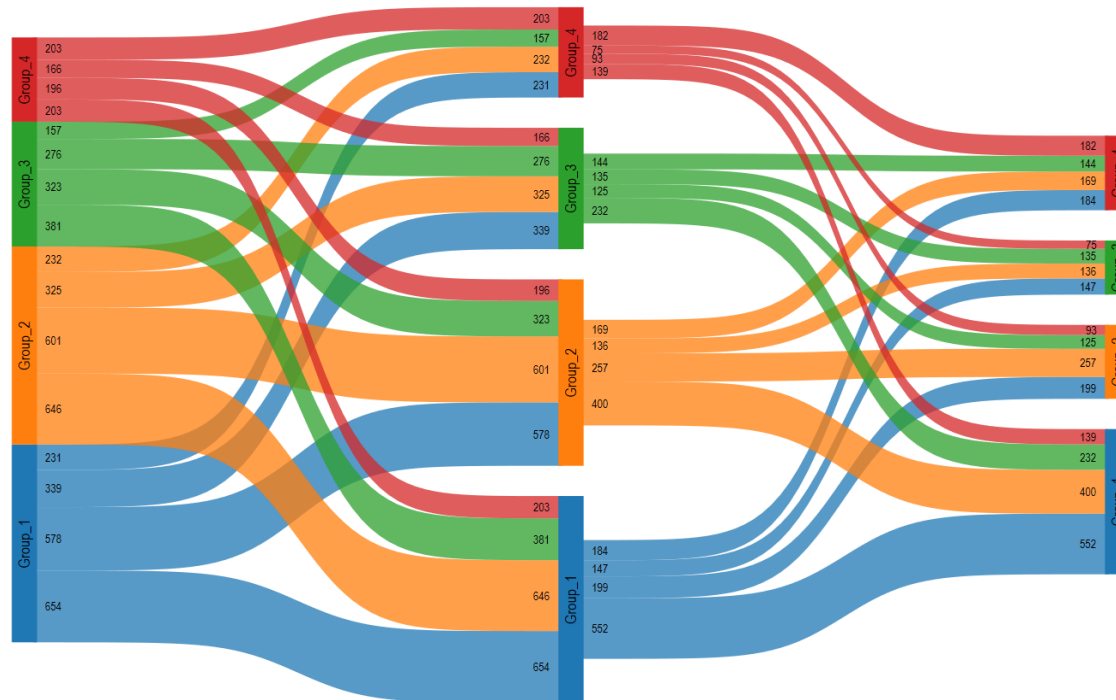


[4 to 5 workdays during a typical week]

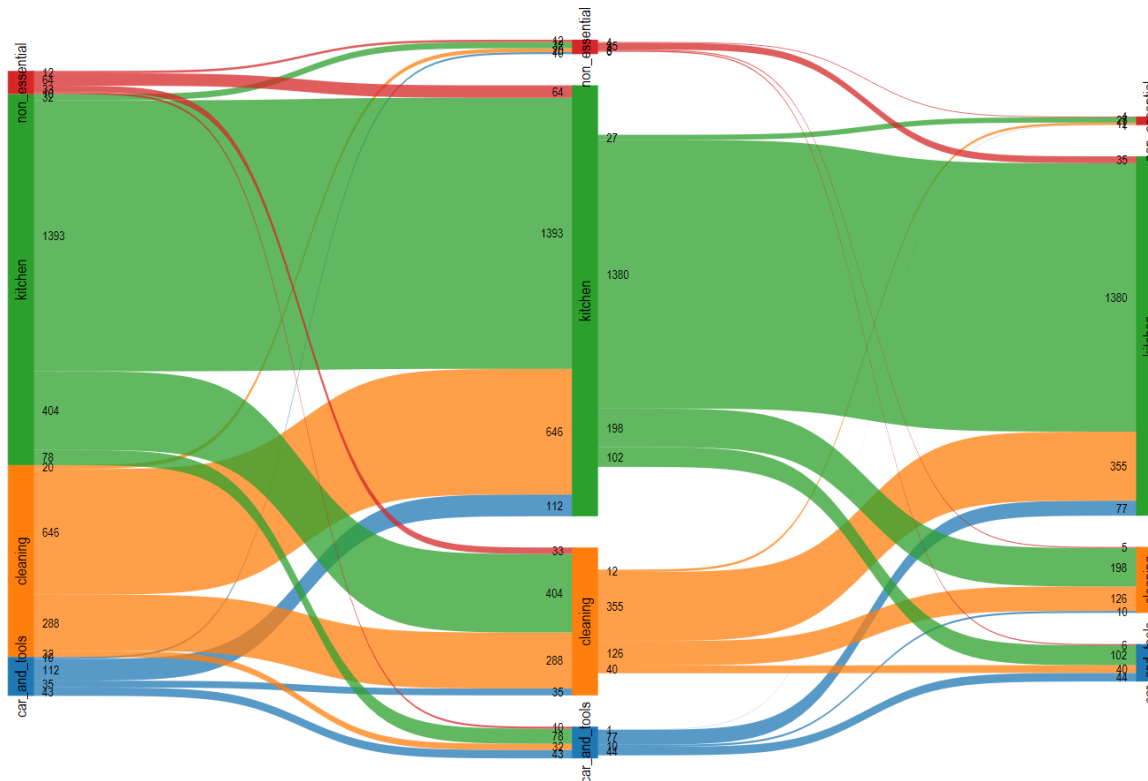
- Design of load restrictions
  - 5kW max load → Select appliances
  - 3.5kW max load → Select appliances
  - 2kW max load → Select appliances
- Study substitution among appliances and across main chores (tasks)



## Finding(s) 1: Flexible substitution among appliances



## Finding(s) 2: Limited substitution across chores (cooking/cleaning)



# Exploring drivers for peak hour routines and prioritized appliances

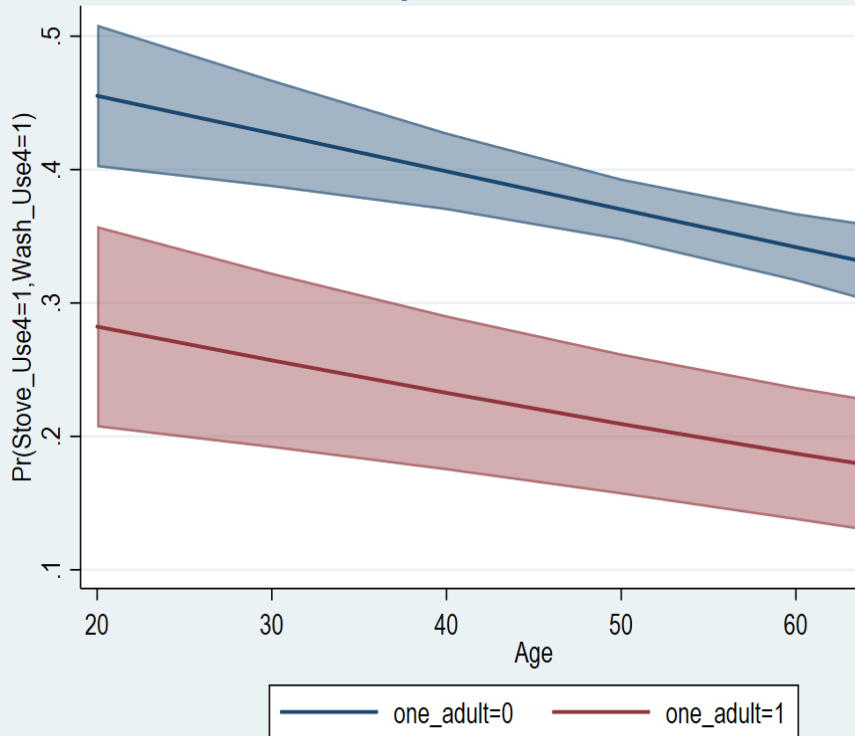
- **Routines:**
  - Dependent variables, during peak hour:
    - Stove  $\geq 2$ days/weekday – Yes/No
    - Washing machine  $\geq 2$ days/weekday – Yes/No
  - Explanatory variables:
    - Age, gender, income, education, one-adult hh, dependents at hh, city size
- **Appliance choice when limited load:**
  - Dependent variables, for 3.5kW limit:
    - Cooking appliances – Yes/No
    - Cleaning appliances (incl dishwasher) – Yes/No
  - Explanatory variables:
    - Routines as defined above + Explanatory variables listed above + Choice when 5kW limit
- Decision process – Simultaneous and/or endogenous

Finding(s) 3: Routines are not endogenous, *only* simultaneously determined

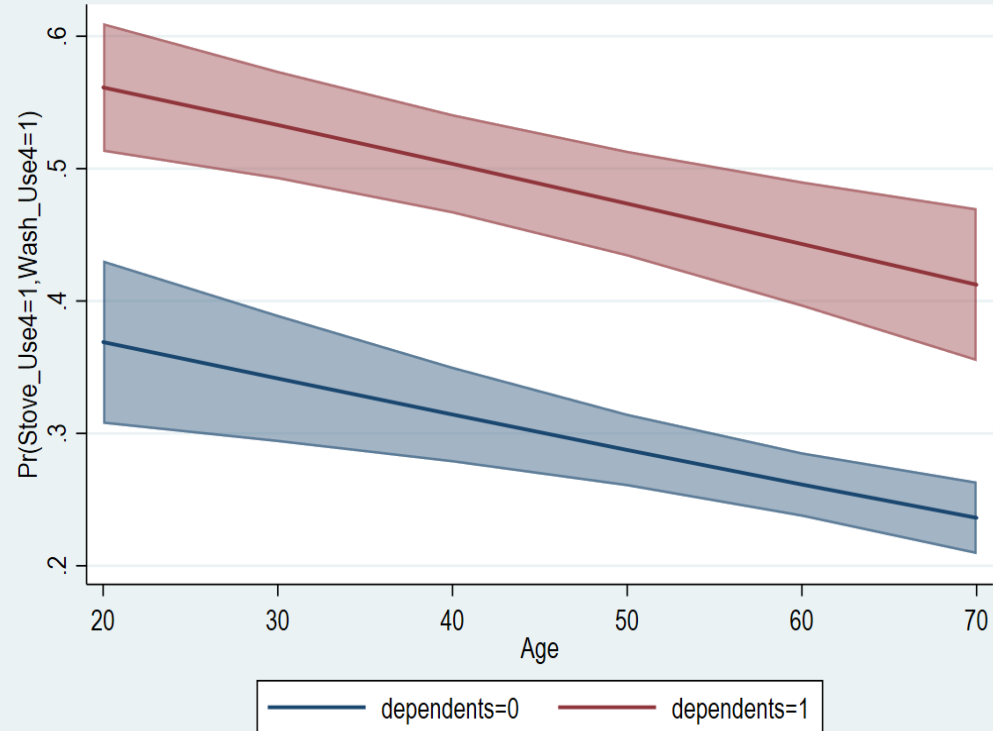
	RBP-I	BP-I	RBP-II	BP-II
Correlation	0.658 (0.600)	0.572*** (0.0498)	0.638 (0.517)	0.573*** (0.0498)
N	1850	1850	1850	1850
r2_a				
ll	-2028.7	-2028.8	-2027.1	-2027.1
aic	4097.5	4095.5	4102.1	4100.1
bic	4207.9	4200.4	4234.7	4227.2

## Finding(s) 4: Differences in probability in engaging in the routines of using both stove and washing machine in a typical week

Predictive Margins of one\_adult with 95% CIs

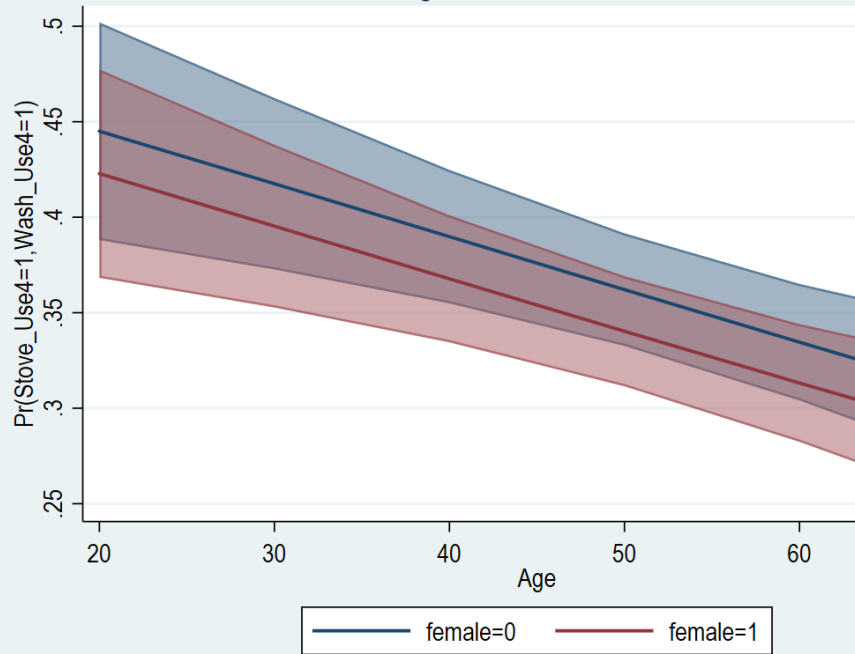


Predictive Margins of dependents with 95% CIs

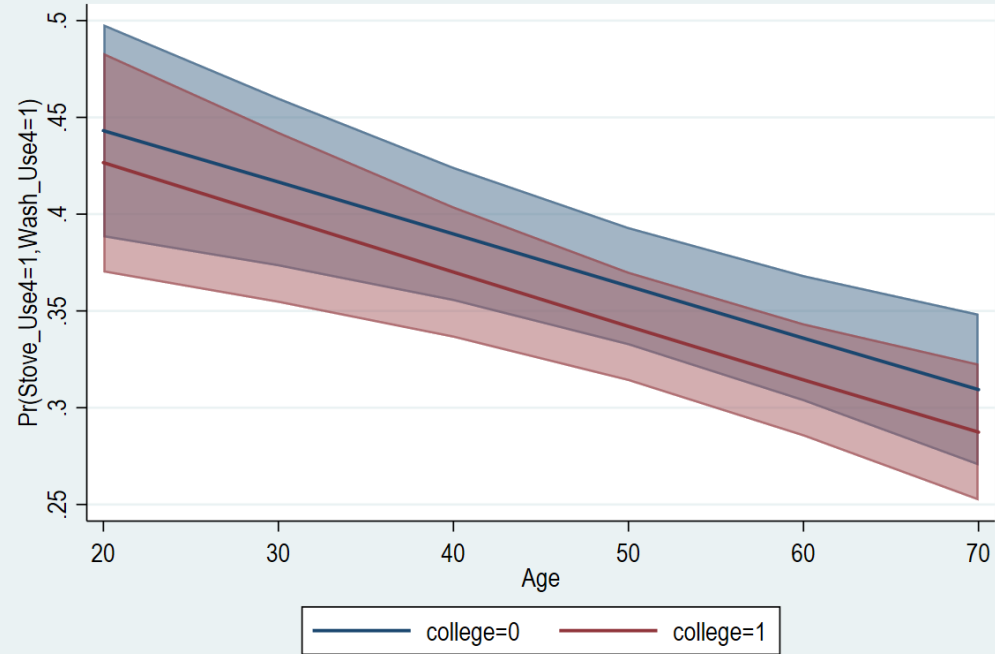


## Finding(s) 4: (Lack of) Differences in probability in engaging in the routines of using both stove and washing machine in a typical week

Predictive Margins of female with 95% CIs



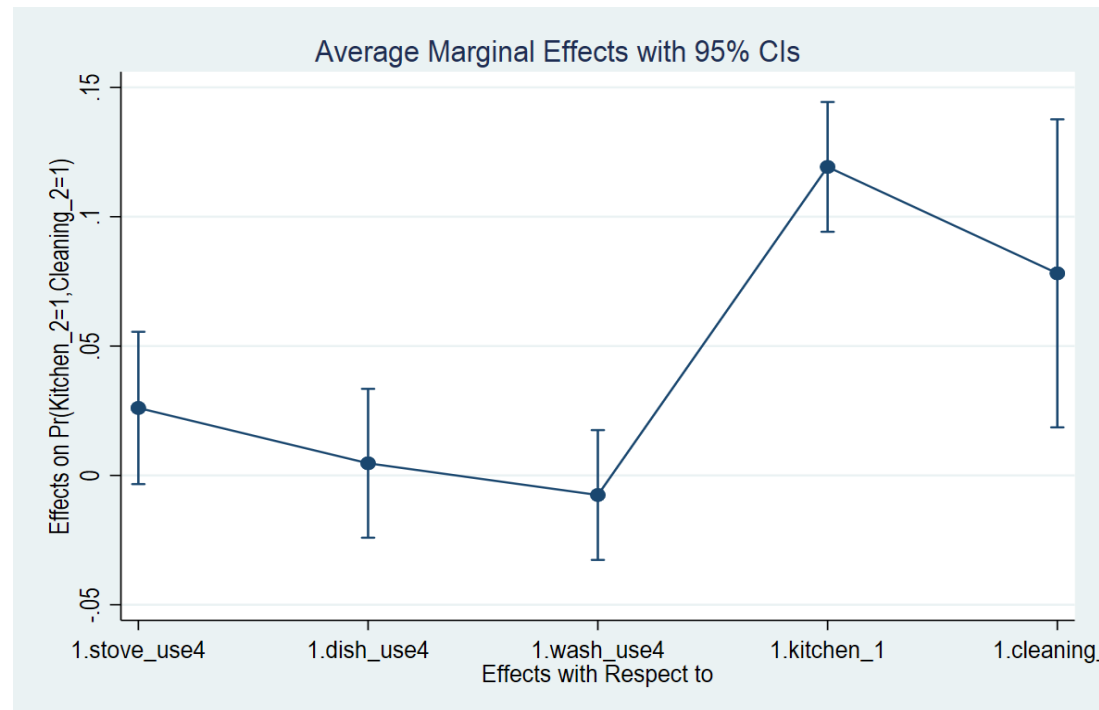
Predictive Margins of college with 95% CIs



Finding(s) 5: Choices under limited load are determined by routines – *directly* and *indirectly* (like a sort of inertia)

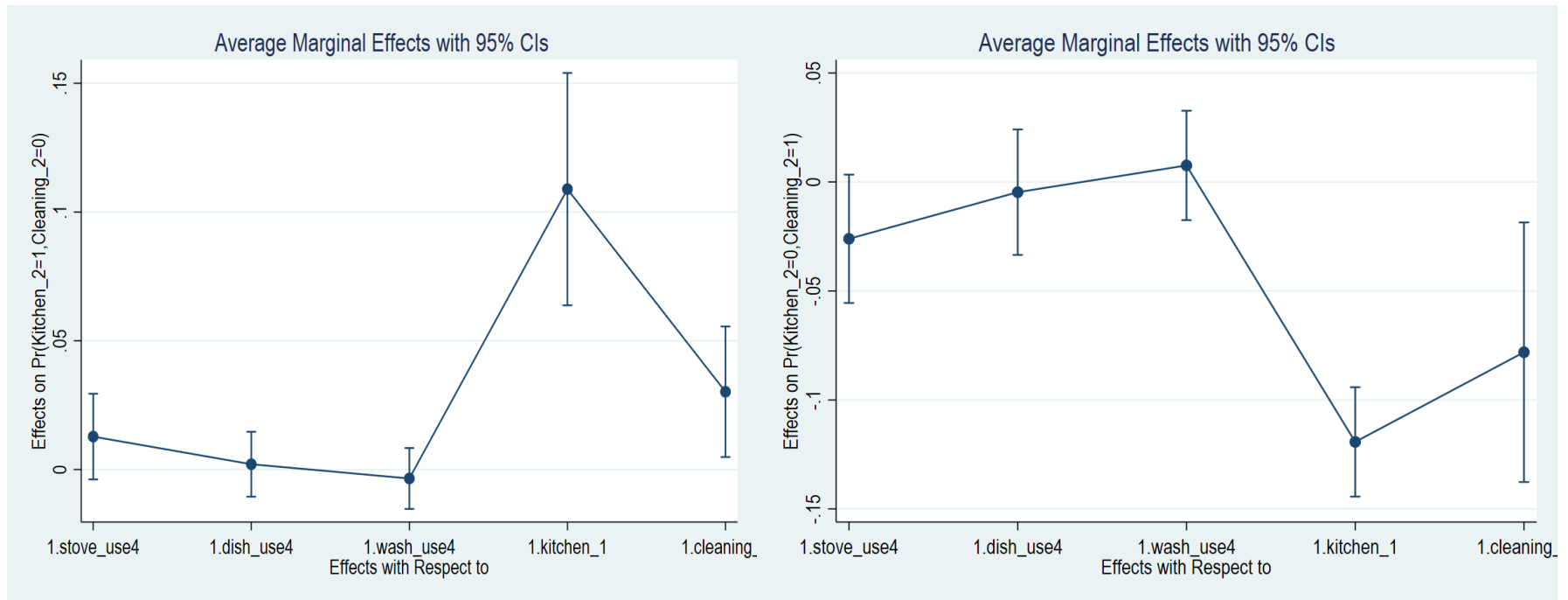
	RBP-I	BP-I	RBP-II	BP-II
Correlation	0.0418 (0.766)	-1.342*** (0.0834)	0.191 (1.020)	-1.394*** (0.0823)
N	1850	1850	1850	1850
r2_a				
ll	-1450.7	-1455.5	-1433.2	-1437.1
aic	2929.4	2937.1	2926.5	2932.3
bic	3006.7	3008.9	3092.1	3092.4

## Finding(s) 6: Effect on probability choosing both cooking and cleaning appliances





## Finding(s) 6: Effects on probability choosing (left) cooking appliances only, and (right) cleaning appliances only



# Concluding remarks

- Household characteristics predict routines
- Routines trumps household characteristics when limited load
- Flexibility across appliances, but within chores
- Household implications from prioritized appliances - but not within the scope of this study
- The 2kW restriction?

Thank you!

Contact: [lars.persson@umu.se](mailto:lars.persson@umu.se)

## Categorization of appliances

- Cooking: oven, hot air oven, stove, microwave, kettle, food processor, baking, electric heater, toaster, waffle iron, coffee maker, coffee machine
- Cleaning: vacuum cleaner, iron, dishwasher, washing machine, tumble dryer